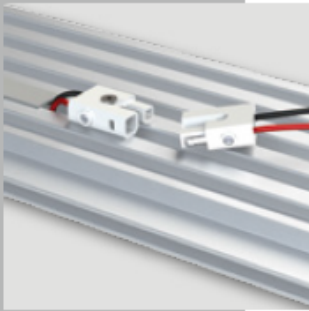
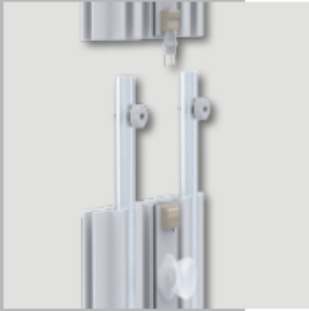
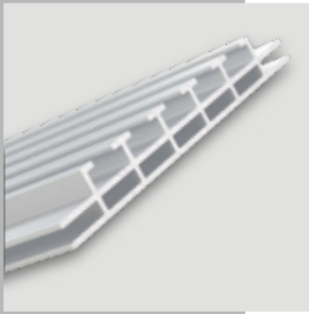


MULTIframe
ALL IN ONE

frames & light boxes

MULTIframe ALL IN ONE



multi frame - all in one

– modulares Leuchtrahmensystem in ABS Transportkoffer

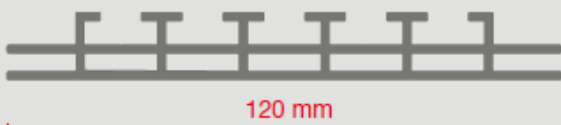
- 1 System 4 Größen
- Bautiefe nur 120 mm
- einfache Montage dank Plug & Play Lichttechnik
- absolut homogene Ausleuchtung durch innovatives Versteifungskonzept
- ABS Transportkoffer BxHxT 39x30x116 cm mit Schaumstoffeinlagen, Rollen und Griff
- ca. 29 kg Transportgewicht

– modular light box display in ABS hardcase

- 1 system 4 sizes
- depth only 120 mm
- easy installation thanks to plug & play lighting technology
- unique rigid frame design – holds the fabric panel tight for a flat panel with even lighting
- ABS hardcase WxHxD 39x30x116 cm with special foam lining, wheels and handle
- approx. 29 kg transport weight

OSRAM
LED Technology Included

Profildesign / profile design

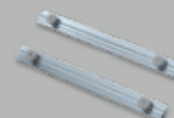


Zubehör / accessories

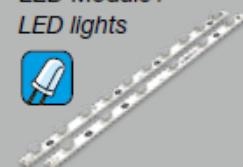
Eckverbinder 90° /
corner connector 90°



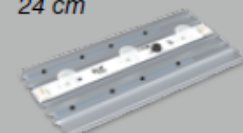
gerade Verbinder /
straight connector



LED Module /
LED lights



Systemverlängerung
24 cm /
system extension
24 cm



Profile in diversen
Farben erhältlich /
profiles in various
colours available



■ 200x248 cm



■ 100x248 cm



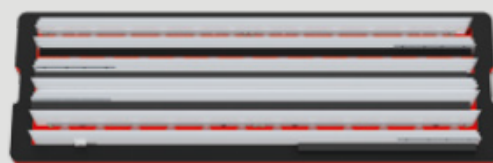
■ 200x200 cm



■ 100x200 cm



Koffereinlagen / *hardcase with foam lining*





Display-Schmiede e.K.

Ringstraße 9
D-86857 Hurlach

Tel.: +49 (0)8248 / 88 84 741

Fax: +49 (0)8248 / 88 84 741

E-Mail: info@display-schmiede.de

Web: www.display-schmiede.de